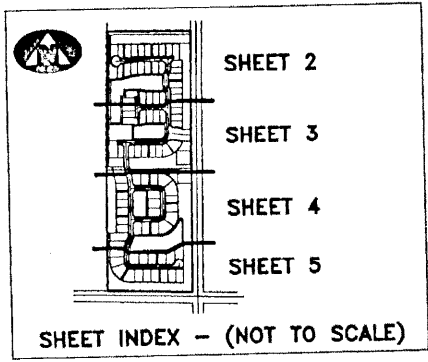
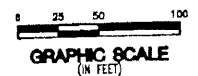


SAN MICHELE

MAY 2001

LYING IN SECTIONS 25 AND 36, TOWNSHIP 41 SOUTH, RANGE 42 EAST, CITY OF PALM BEACH GARDENS, PALM BEACH COUNTY, FLORIDA



- LEGEND:**
- DENOTES A RADIAL LINE
 - DENOTES A CENTERLINE
 - DENOTES POINT OF CURVATURE
 - DENOTES POINT OF TANGENCY
 - DENOTES END OF CURVE
 - DENOTES UTILITY EASEMENT
 - DENOTES DRAINAGE EASEMENT
 - DENOTES DEED BOOK
 - DENOTES LIMITED ACCESS EASEMENT
 - DENOTES RADIUS DISTANCE
 - DENOTES ARC LENGTH DISTANCE
 - DENOTES CENTRAL ANGLE
 - DENOTES LONG CHORD BEARING
 - DENOTES CHORD DISTANCE
 - DENOTES POINT OF BEGINNING
 - DENOTES POINT OF COMMENCEMENT
 - DENOTES OFFICIAL RECORDS BOOK
 - DENOTES PLAT BOOK NUMBER
 - DENOTES PAGE NUMBER
 - DENOTES PERMANENT CONTROL POINT
 - DENOTES PERMANENT REFERENCE MONUMENT
 - DENOTES SEACOAST UTILITY AUTHORITY UTILITY EASEMENT
 - DENOTES SEACOAST UTILITY AUTHORITY LIFT STATION EASEMENT
 - DENOTES SEACOAST UTILITY AUTHORITY WELLSITE EASEMENT
 - DENOTES A SET PERMANENT REFERENCE MONUMENT (NO. 2171)
 - DENOTES A FOUND PERMANENT REFERENCE MONUMENT (NO. 2171)
 - DENOTES A SET PERMANENT CONTROL POINT (NO. 2171)
 - DENOTES A FOUND PERMANENT CONTROL POINT (NO. 2171)

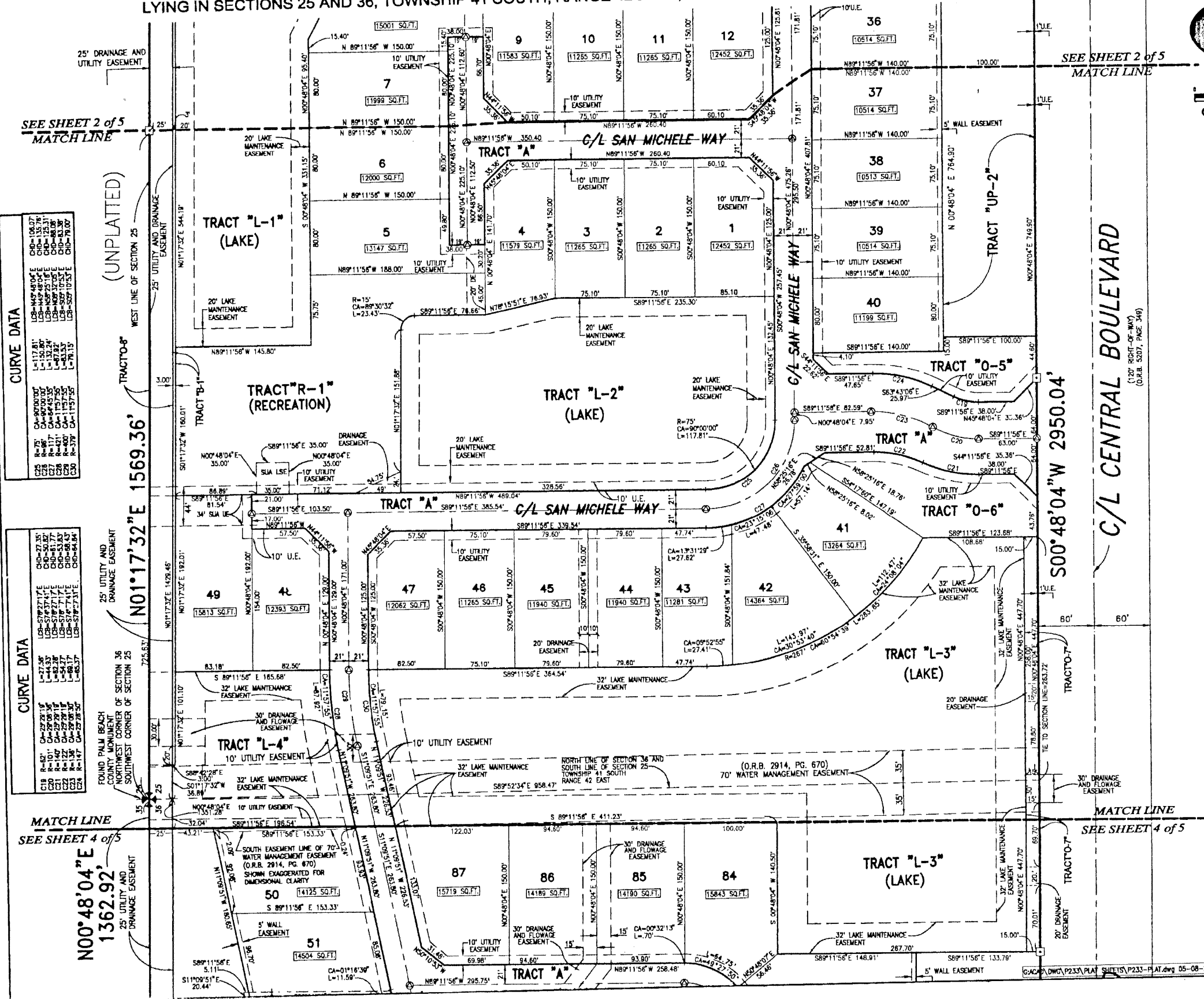
SURVEYOR'S NOTES:

1. THE BEARINGS SHOWN HEREON ARE BASED ON OR ARE RELATIVE TO THE BEARING OF SOUTH 00°48'04" WEST, ALONG THE WEST RIGHT-OF-WAY LINE OF CENTRAL BOULEVARD, AS SHOWN HEREON.
2. IN THOSE INSTANCES WHERE UTILITY OR DRAINAGE STRUCTURES ARE CONSTRUCTED IN CONFLICT WITH THE PLATTED PERMANENT CONTROL POINT POSITION STRADDLERS MONUMENTED AS PERMANENT CONTROL POINTS WILL BE SET TO REFERENCE THE PLATTED POSITION.
3. LINES THAT INTERSECT CURVES ARE NOT RADIAL UNLESS OTHERWISE NOTED.
4. THE NORTHERN PALM BEACH COUNTY IMPROVEMENT DISTRICT HAS A FRONTAGE EASEMENT OVER THE 30 FOOT DRAINAGE EASEMENTS AND OVER TRACT "A", AS SHOWN HEREON.
5. THIS INSTRUMENT WAS PREPARED BY W.L. VAN CAMPEN, P.S.M. IN AND FOR THE OFFICES OF BENCH MARK LAND SURVEYING AND MAPPING INC., 4152 WEST BLUE HERON BOULEVARD, SUITE 121, RIVIERA BEACH, FLORIDA.

BENCH MARK LAND SURVEYING & MAPPING, INC.
 4152 W. BLUE HERON BOULEVARD • SUITE 121
 RIVIERA BEACH • FLORIDA 33404
 PHONE: (561) 848-2102 • L.B. 2111 • FAX: (561) 844-9659
 EMAIL: bmlm@aol.com • WEB: http://members.aol.com/bmlm

RECORD PLAT SAN MICHELE

DWN: MKH	FB:	DATE: 02-12-2001	WO#: P233
CKD: WVC	FILE: P233-PLAT	SCALE: 1" = 50'	SHEET 3 OF 5



CURVE DATA

CA=106.07°	CB=136.78°
CB=136.78°	CD=123.31°
CD=123.31°	CE=83.39°
CE=83.39°	CF=103.52°
CF=103.52°	CG=113.75°
CG=113.75°	CH=79.00°

CURVE DATA

CA=27.35°	CB=51.37°
CB=51.37°	CD=53.83°
CD=53.83°	CE=51.83°
CE=51.83°	CF=48.43°
CF=48.43°	CG=51.83°
CG=51.83°	CH=48.43°
CH=48.43°	CI=51.83°
CI=51.83°	CJ=48.43°
CJ=48.43°	CK=51.83°
CK=51.83°	CL=48.43°
CL=48.43°	CM=51.83°
CM=51.83°	CN=48.43°
CN=48.43°	CO=51.83°
CO=51.83°	CP=48.43°
CP=48.43°	CQ=51.83°
CQ=51.83°	CR=48.43°
CR=48.43°	CS=51.83°
CS=51.83°	CT=48.43°
CT=48.43°	CU=51.83°
CU=51.83°	CV=48.43°
CV=48.43°	CW=51.83°
CW=51.83°	CX=48.43°
CX=48.43°	CY=51.83°
CY=51.83°	CZ=48.43°